

## Directions and deliveries exhibition stand construction

### Venue

Volkshaus Jena  
 Carl-Zeiss-Platz 15, 07743 Jena, Germany  
<https://www.volkshaus-jena.de/>

### Directions

A4 from Erfurt/Gera, exit Jena-Lobeda,  
 expressway to the city center with good signs  
 A9 from Berlin/Munich, exit Eisenberg, B7 to  
 Jena  
 B88 from Naumburg or Weimar

### Parking cars

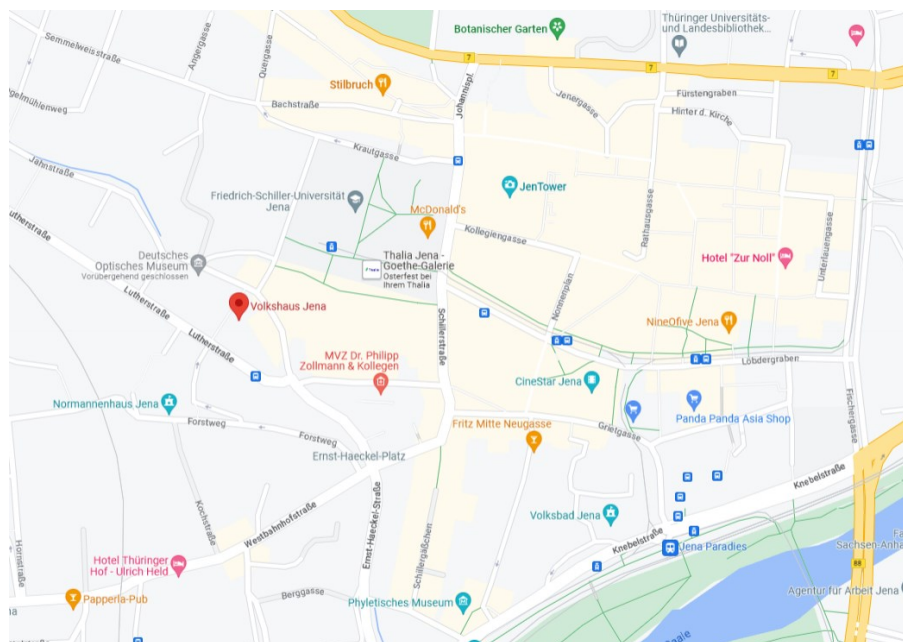
paid parking garage of the shopping center  
 Goethe-Galerie (directly next to the Volkshaus)

### Parking Trucks

#### Address parking lot:

PVS Veranstaltungsservice Jens Peterlein  
 Im Wehricht 1, 07747 Jena-Burgau, Germany

The access road to the site is located directly on the slip road to the expressway and is secured with a gate. **Please register your truck parking space in advance** at [info@dtg2023.org](mailto:info@dtg2023.org). You will then be contacted by a member of staff who can open the gate for you on the set-up day



### Directions and Delivery for Booth Constructors

Deliveries may only be made during the above-mentioned construction periods. In order to ensure a smooth flow of traffic during the construction and dismantling periods and the duration of the event, traffic regulations and traffic management rules must be observed.

All vehicles may only drive to the loading areas for loading and unloading and must be removed immediately after the loading process. Parking in the loading area is prohibited. Engines must always be switched off during waiting times.

Loading and unloading of trucks is possible via the lot directly in front of the Volkshaus, **Carl Zeiss Platz 15**. Since the parking space is limited, waiting times may occur here. Up to 3 trucks (7.5t) can be unloaded at the same time.

2 trucks at the same time can unload directly via the main entrance, which is separated from the loading area by two steps. However, by means of a tail lift, barrier-free unloading into the exhibition area in the hall building is possible. A third truck can be unloaded at the same time via the side entrance at the front. However, this entrance is NOT at ground level; individual steps must be negotiated.

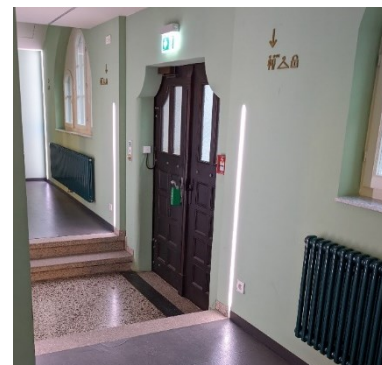
There are several access doors available. Depending on the area in which your exhibition stand is located, we recommend using the following **alternative access points**:

**Exhibitors** in the Hall Building Ground Floor (**Max-Reger-Halle and Wandelhalle**)

- Unloading at ground level via the main entrance (yellow arrow). A ramp is available. You enter directly into the Max Reger Hall with access to the Wandelhalle.



- Unloading via the side entrance at the front of the Hall Building (red arrow). This entrance is NOT at ground level, there are single steps to overcome. You will reach the Wandelhalle and further the Max Reger Hall via the main staircase.



### Exhibitors in Hall Hermann-Schaeffer-Saal (Ground floor)

- Unloading via the main entrance (at ground level, ramp available). You can reach the Hermann Schaeffer Hall, which is directly adjacent to the Max Reger Hall, at ground level.

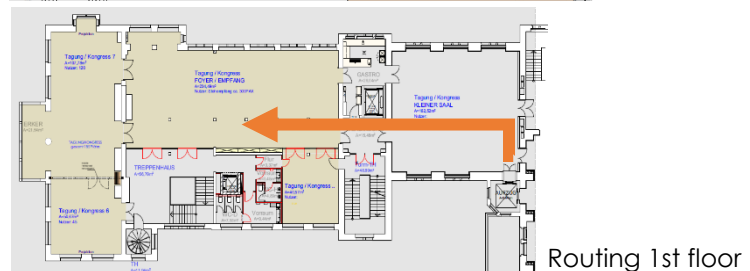
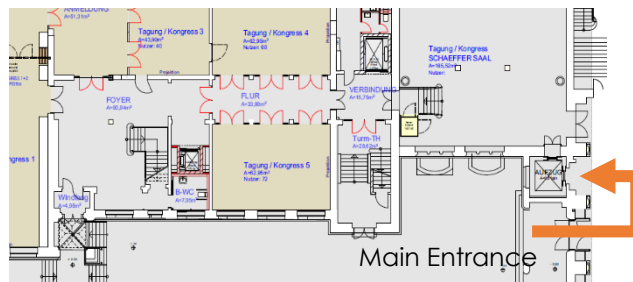


### Exhibitors in 1st floor (Carl Zeiss Saal)

- Delivery via the main entrance (at ground level, a ramp is available): immediately to the left after the entrance doors is the freight elevator (door width 1.25 m). This will take you to the small hall on the 1st floor, which you may cross during the set-up times. From here you reach the Carl-Zeiss-Foyer via the staircase, passing through 2 doors.



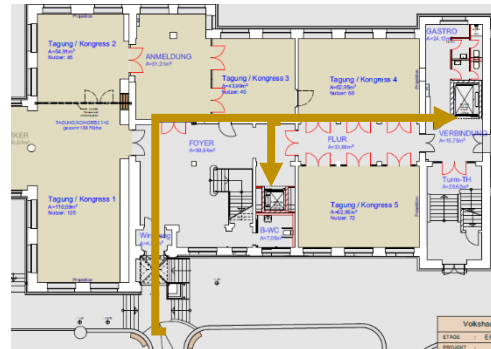
Unload Ground floor



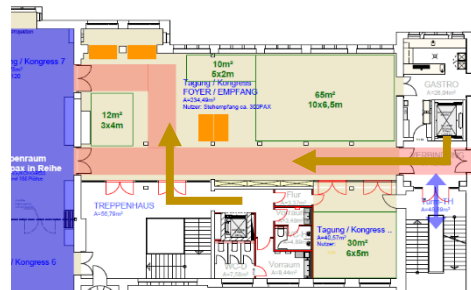
- Unloading via the access to the tower building:
  - o A ramp is attached to the door so that the foyer can be reached barrier-free from Carl-Zeiss-Platz.
  - o You cross the foyer in the direction of the hall building and reach an elevator (door width 1.10 m, depth 2.30 m), which takes you to the stairwell on the 1st floor; through a door you reach the Carl Zeiss foyer.
  - o Or: In the tower building foyer, you will find a small elevator directly behind the stairs; this will take you to the stairwell on the 1st floor and from there directly to the Carl Zeiss Hall.



Unload with ramp



Ground floor tower building, direction to elevators



1st floor Tower Building  
 Direction from elevators to  
 Carl Zeiss Saal

## Parking

**Parking for cars** can be found directly next to the Volkshaus in the paid parking garage of the Goethe-Galerie shopping center.

**Parking spaces for trucks** can be offered by the local engineering company, which have sufficient parking space.

Address: PVS Veranstaltungsservice Jens Peterlein  
 Im Wehrgt 1  
 07747 Jena-Burgau  
 Germany

Costs: follows

The access road to the site is located directly on the slip road to the expressway and is secured with a gate. **Please register your truck parking space in advance** at [info@dtg2023.org](mailto:info@dtg2023.org). You will then be contacted by a member of staff who can open the gate for you on the set-up day

## Set-up, Dismantling and Opening Hours

Set-up and dismantling have to be carried out and finished during the below-mentioned periods. To ensure safety, no construction activities are allowed during opening hours. If you require additional construction times, please contact K.I.T. Group GmbH Dresden ([info@dtg2023.org](mailto:info@dtg2023.org)) in due time. The expenses and costs arising thereby will have to be borne by the exhibitor.

Booths or exhibits not dismantled and removed in time will be disposed of at the exhibitor's expense and risk without checking the residual value. Liability of K.I.T. Group or the Volkshaus Jena is excluded.

<b>Set-up times</b>	Wednesday, 25 Oct 2023	08:00 – 20:00 h	
<b>Opening hours</b>	Thursday, 26 Oct 2023	08:00 – 18:00 h	
	Friday, 27 Oct 2023	08:00 – 18:00 h	
	Saturday, 28 Oct 2023	08:00 – 16:00 h	
<b>Dismantling times</b>	Saturday, 28 Oct 2023	14:30 – 16:30 h	only minor, low-noise works within the booth
		16:30 – 22:00 h	dismantling of booths

Please note that all times are preliminary and might be changed slightly due to organisational requirements.

## Disposal of packaging waste and empties

It is requested that packaging waste/empties etc. be taken away by your booth construction company after assembly and dismantling. It is not permitted to leave materials behind in the Heinrich-Lades-Halle. Materials left behind will be disposed of at the exhibitor's expense at an increased charge without checking their value.

No empties may be stored in or outside the booths, in the Heinrich-Lades-Halle or on its outside grounds during the duration of the congress. Any empties must be removed as quickly as possible. Any empties produced during assembly and dismantling must be removed after work has been completed on the stand.

## Contact

If you have further questions or require additional information, please contact:

Anja Binning

K.I.T. Group GmbH Dresden, Bautzner Str. 117–119, 01099 Dresden, Germany

phone: +49 0351 65573-135

e-Mail: [info@dtg2023.org](mailto:info@dtg2023.org)